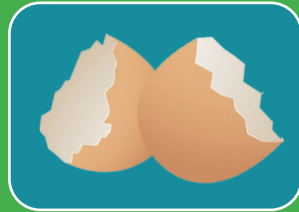
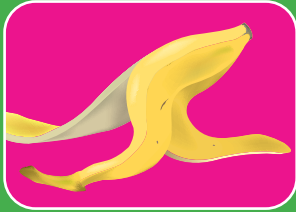
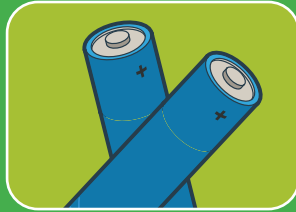


BIN COLLECTIONS AND RECYCLING GUIDE 2025

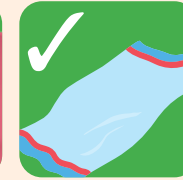


TEXTILES Collected weekly. Can also be recycled at community recycling centres.

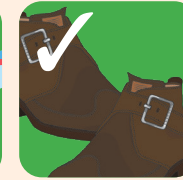
YES PLEASE



Clothes



Towels



Paired shoes



Bags and belts

NO THANKS



Pillows and duvets

Remember – Items must be clean, dry and in no more than one small, tied carrier bag placed next to your bin.

SMALL ELECTRICALS Collected weekly. Can also be recycled at community recycling centres.

YES PLEASE



Anything with a plug



Anything battery-operated



Batteries in a separate bag



Chargers

NO THANKS



Lightbulbs

Remember – Items must fit into one small, tied carrier bag that is placed next to your bin. Batteries should be put into a separate small bag.

Reduce, reuse and recycle across Surrey

Surrey has hundreds of locations that can help you reduce, reuse, repair and recycle even more of your waste. Find your local ones using Surrey's zero waste map at surreyep.org.uk

FOOD WASTE

Collected weekly from your separate food waste bin.

**YES
PLEASE**



All food



Meat



Eggshells



Teabags

**NO
THANKS**



Liquids

Remember – Reduce food waste by planning shops in advance, freezing food and using up leftovers. For more tips, visit surreyep.org.uk.

GARDEN WASTE

Collected fortnightly from your separate garden waste bin or can be recycled at community recycling centres.

**YES
PLEASE**



Grass cuttings



Prunings



Fallen leaves



Cut flowers

**NO
THANKS**



Soil and stones

Remember – Go online to jointwastesolutions.org to sign up to the garden waste collection service and visit surreyep.org.uk to buy a reduced price compost bin.

Contact us – To get in touch with us directly, please visit jointwastesolutions.org/contact-us. Recycle more including items like plastic bags, crisp packets and Tetra Paks by using the Surrey Recycles search tool, or downloading it as an app.

RECYCLING BIN

Collected fortnightly.



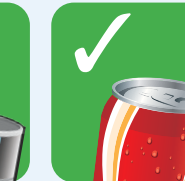
Dry paper



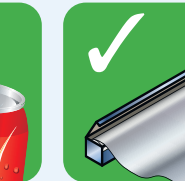
Dry cardboard



Metal tins



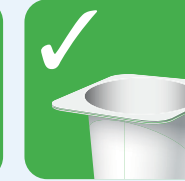
Metal cans



Foil



Plastic bottles



Plastic pots



Plastic trays



Plastic tubs



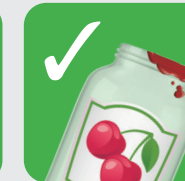
Glass bottles and jars

RUBBISH BIN

Collected fortnightly.



Black bin bags



Anything with food on it



Tissues and wipes



Crisp packets and wrappers



Greasy pizza boxes



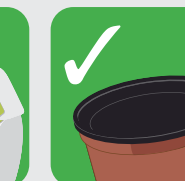
Polystyrene



Coffee cups



Nappies



Plant pots



Cling film

Remember

- To order a replacement bin, visit jointwastesolutions.org/order-a-new-bin
- For advice about bin collections in adverse weather, visit jointwastesolutions.org.
- Please make sure your bins are left on your property boundary by 6am on your collection day.